



COMPLEX FOOT & ANKLE CLINIC

Our flagship Complex Foot & Ankle Clinic combines our high end podiatry and biomechanics services in one specialised clinic. Overseen by Dr Chris Bishop PhD, this clinic provides patients suffering from complex foot and ankle problems the peace of mind of how best to manage their pain long term.

THE PROCESS



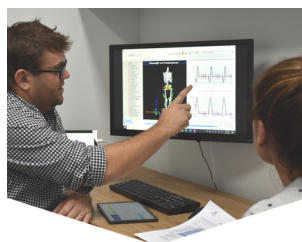
PODIATRY ASSESSMENT

You are initially seen by one of our podiatrists who will take a detailed history, assess the structure and function of your foot, review and imaging/surgical reports and arrive at a preliminary diagnosis.



3D GAIT ANALYSIS

We perform a detailed 3D gait analysis of your foot and ankle. Our 3D cameras track the positions of reflective markers on your skin as you walk, and force platforms measure the forces applied to the body. This informs a biomechanical model of your gait.



REPORT

We provide each patient with a written report and video of the analysis. This report provides recommendations of what you need to do to return to pain free exercise. Suggestions for appropriate treatment can also be provided.

APPOINTMENT INFORMATION

A Complex Foot and Ankle Clinic appointment take one hour. Please wear shorts that do not hang below the knees to your appointment. Alternatively you can also wear active tights if preferred. Please be changed and ready prior to your appointment. If you do not have the correct clothing, we can provide you with some shorts.

If your practitioner has requested that you should be tested wearing shoes/orthotics, please bring these along with you to your analysis.

